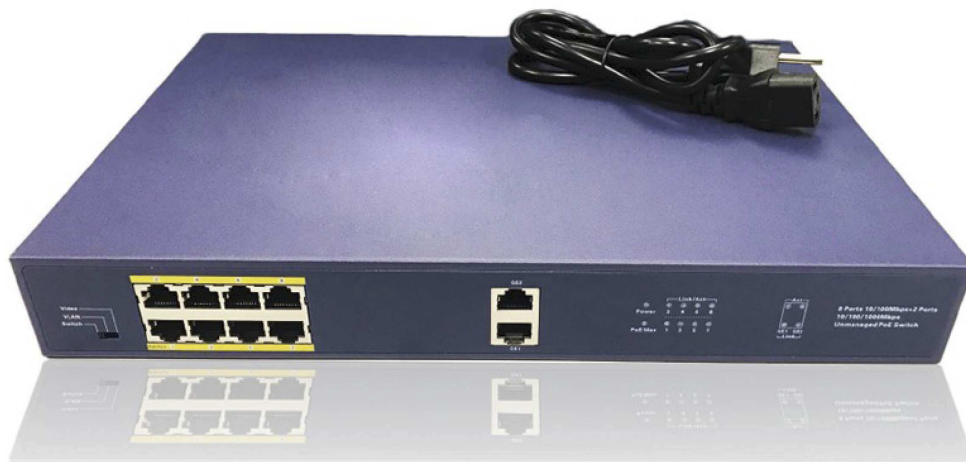


SS-POESE8P-2G-250



8-port 10/100Mbps PoE Switch



Features

- Auto detect powered device(PD)
- Safe and reliable power to most of PoE end device
- Plug & Play. No configuration required
- Fully IEEE802.3af/at compliant
- Designed for IP security with 10/100/1000Mbps Uplink

Introduction

SS-POESW8P-2G-250, 8 port 10/100 Mbps PoE Switch is a network products which provide power and data from a single port using Power over Ethernet(PoE) a single Cat5 cables. It is easy to operate plug and play, simplifying the installation, and no configuration required.

SS-POESE8P-2G-250



8-port 10/100Mbps PoE Switch

Specifications:

Model	SS-POESE8P-2G-250		
Ordering Info	SS-POESE8P-2G-250		
Port Description	PoE Port	100M RJ45	Port 1-8
	Uplink Port	1000M RJ45	Port GE1-GE2
PoE	Max PoE Ouput		30W
	Total Power Consumption		250W
	PoE Port Priority		Support
LED Indicator	Power、PoE MAX、Link/Act 、Link、 Act		
Processing Types	Store and Forward		
Transmission Mode	Full duplex/Half duplex		
Performance Spec	Bandwidth	5.6Gbps	
	Packet Forwarding Rate	4.17MPPS	
	Address Database Size	16K	
Netowrk Standard	IEEE802.3i 10 BASE-T IEEE802.3u 100 BASE-TX IEEE802.3ab 1000 BASE-T IEEE802.3x Flow Control IEEE802.3af Power over Ethernet IEEE802.3at Power over Ethernet IEEE802.3az EEE		
Power Input	AC100-240V 50/60Hz		
Cables	UTP cat.5 or abover		
Environment Spec	Working Temperature: -10℃-45℃ , Working Humidity: 10%-90%,non-condensing		
	Storage Temperature: -20℃-70℃ , Storage Temperature: 5%-95%,non-condensing		