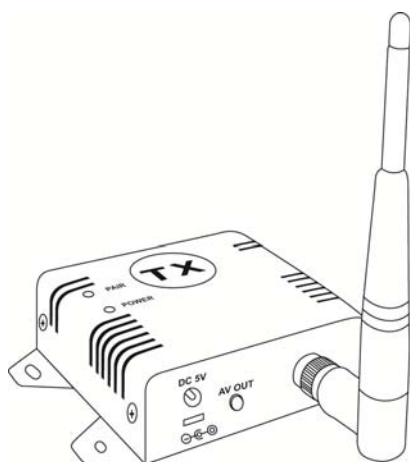
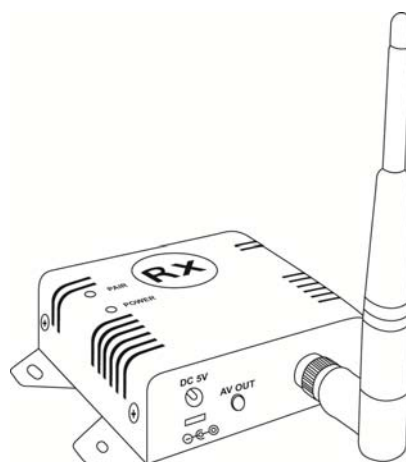


2.4GHz Digital Audio/Video Transmitter & Receiver Kit

KW24K



KW2425



KW2420

A) Introduction

The 2.4GHz Digital Audio/Video 4CH Transmitter & Receiver Kit is a digital wireless MPEG4 audio/video system that uses 2.4GHz Frequency Hopping technology and GFSK (Gaussian Frequency-Shift Keying) modulation, and random ID codes to protect personal privacy and prevent unauthorized access to the system. There are over one billion hopping sequences to minimize interference and deliver consistently an excellent video and audio quality for up to 500ft / 150m away.

Using this 2.4GHz Digital Audio/Video 4CH Transmitter & Receiver Kit, you can enjoy greater convenience and security in many ways.

- Connect a camera to a wireless security system.
- Monitor your sleeping baby, playing children, the elderly, or the disabled on TV using your existing camcorder.
- See who is outside the door on TV through your camera or miniature CCD camera.
- Monitors and records meetings from another room.
- And many more!

B) Features

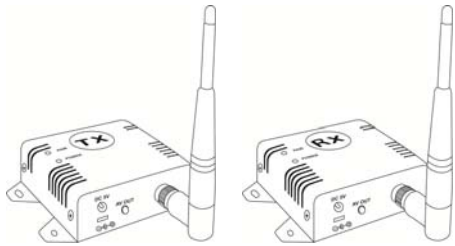
- Interference-free (Wi-fi, Bluetooth, Microwave-oven, Cordless phones, etc.)
- Real time monitoring and recording
- MPEG4 compression
- Auto-pairing; Data rate up to 6Mbps
- Transmission distance up to 500ft / 150m (clear line of sight)
- Video resolution of 720x480 @ 30fps (NTSC) or 768x576 @ 25fps (PAL)
- 3dBi omni-directional antenna
- 5V DC



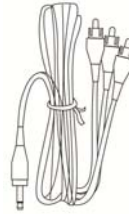
C) Package Contents

Please check the following items inside the box for 2.4GHz Digital Audio/Video Kit, and contact your dealer if anything is missing.

- One (1) set of 2.4GHz Digital Audio/Video 4CH Transmitter-Tx and Receiver-Rx
- Two (2) Antennas
- Two (2) Audio/Video Cables (3.5mm plug to 3 RCA plug)
- Two (2) Power Adaptor (100V ~ 240V AC, 5V DC / 1A in Jack)



Transmitter-Tx and Receiver-Rx (with Antenna)

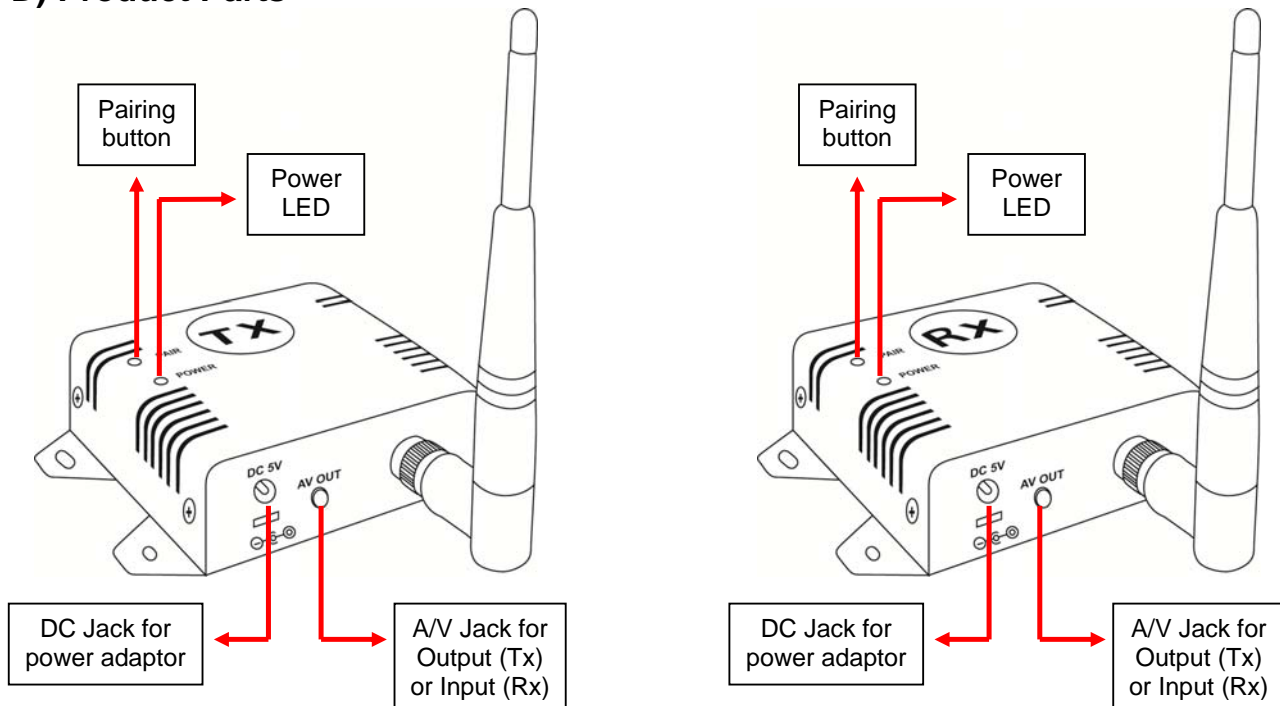


Audio/Video Cable x2



5V DC x2

D) Product Parts



E) Pairing the Transmitter-Tx & Receiver-Rx

Before shipment these products have been matched by ID code, so you can immediately use them out of the box. To re-pair them, you have to follow the instructions below:

1. Power on the Tx and Rx by inserting the power adaptor jack.
2. Press the pair button of Tx or Rx and do not release until the power LED begins to flash.
3. The devices will enter into pairing state and automatically link to one another by ID code.
4. Do not unplug the power during the pairing process.
5. When pairing is completed, the power LED for both devices will stop flashing and stay lit.

*** This system uses 5V DC. Do not use any other power supply.**

Please note:

Pressing the pairing buttons on the Tx and Rx at the same time is not necessary. Put one device in pairing mode, then the other. When pairing the Tx and Rx, place them about 10ft / 3m apart. The display picture will show the signal strength in the top right corner on the picture.



F) Specifications

	Transmitter - Tx	Receiver - Rx
Model	KW24K - Kit	
	KW2425 - Tx	KW2420 - Rx
Video Type	NTSC / PAL	
Video Compression	MPEG4	
Video Resolution	720x480 @ 30fps (NTSC) or 768x576 @ 25fps (PAL)	
Operating Frequency Band	2.400GHz~2.4835 GHz	
Data Rate	Up to 6Mbps	
Receiver Sensitivity	--	-85dBm
Transmission Channels	80 channels auto selection	
Modulation	16QAM/QPSK/BPSK	
Video Bit Rate	Up to 12Mbps	
Video Input Level	1V p-p, 75 ohms	1±0.2V p-p, 75 ohm
Audio Input Level	1V p-p, 600 ohm (STEREO)	1±0.2V p-p, 600 ohm (STEREO)
Audio/Video Port	In, 1x Video, 2x Audio (L/R)	Out, 1x Video, 2x Audio (L/R)
Random ID Code	Up to 4 million sets	
Antenna	Omni-directional, 3dBi	
Operational Range	Up to 500ft / 150 (clear line of sight)	
PA Output Power	16dBm	
Maximum Transmission Power	100mW	--
Power Consumption	1.9W	
Power Supply	5V DC, 1.2A for AC Adaptor	
Dimension	76mm x 73mm x 24mm	
Weight	82g	

*Specifications are subject to change without notice

G) Troubleshooting

Problems	Possible Solution
No picture or sound	Check all cable connections
	Make sure power plugs are pushed all the way in
	Check power switches on the remote TV or DVR and Video source (Camera, Camcorder, etc.)
	Check if the POWER LED of the Tx and Rx are lighted. The LINK LED should be lit under normal operation.
Interference: picture or audio	If their LINK LED are not lit, re-pair the devices by following the instructions in section E of this manual.
	Adjust Tx and Rx antenna orientation
	Try to place Tx and Rx closer to one another.
	If using a microwave oven, turn it off.
	Remove microwave oven from path between Tx and Rx.

Cautions

1. Be sure the Tx and Rx are connected to the equipment correctly (e.g. Connect the transmitter to the camera, and the receiver to the TV or DVR).
2. When DC plug is pulled out from Tx or Rx, wait a few seconds before inserting it again.
3. Adjust antenna to decrease interference (vertical or horizontal).
4. For optimal reception, place the devices in an un-obstructed environment (open space) and/or in direct line of site. Place the device as high as possible to avoid obstacles and at least 5ft / 1.5m from one another.
5. If for some reason the devices stop working, try to turn power off and back on again after 30 seconds for them to re-link.
6. It is suggested not to exceed 10 pairs of Tx and Rx in any one location.

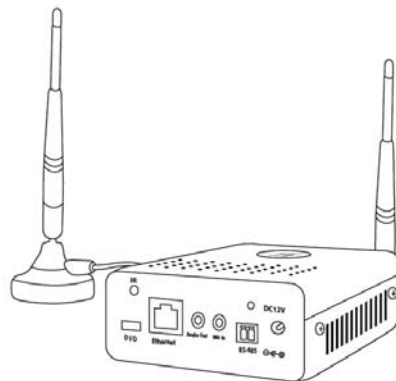
LIMITED ONE (1) YEAR WARRANTY AND EXCLUSIONS

Manufacturer warrants to the original consumer purchaser and not for the benefit of anyone else that this product at the time of its sale by Manufacturer is free of defects in materials and workmanship under normal and proper use for one (1) year from the purchase date. Manufacturer's only obligation is to correct such defects by repair or replacement, at its option, if within such one (1) year period the product is returned prepaid, with proof of purchase date, and a description of the problem. This warrant excludes and there is disclaimed liability for labor for removal of this product or reinstallation. This warranty is void if this product is installed improperly or in an improper environment, overloaded, misused, opened, abused, or altered in any manner, or is not used under normal operating conditions or not in accordance with any labels or instructions. **There are no other implied warranties of any kind, including merchantability and fitness or a particular purpose**, but if any implied warranty is required by the applicable jurisdiction, the duration of any such implied warrant, including merchantability and fitness of or a particular purpose, is limited to one (1) year. **Manufacturer is not liable for incidental, indirect, special, or consequential damages, including without limitation, damage to, or loss of use of, any equipment, loss sales or profits or delay or failure to perform this warranty obligation.** The remedies, provided therein are the exclusive remedies under this warranty, whether based on contract, tort or otherwise.

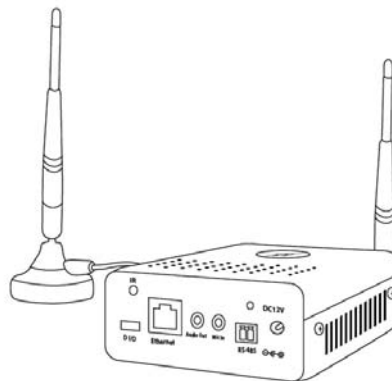
H) Related Products

2.4GHz Digital Audio/Video/Data Transmitter & Receiver Kit

Model: KW5905



Transmitter-Tx



Receiver-Rx

Features:

- 2-in-1 digital audio to video data kit
- With coded/decoded to secure your images
- H.264 compression @ 30fps
- RS-485 for PTZ
- Two-way audio communication
- 5dBi omni-directional antenna
- 12V DC